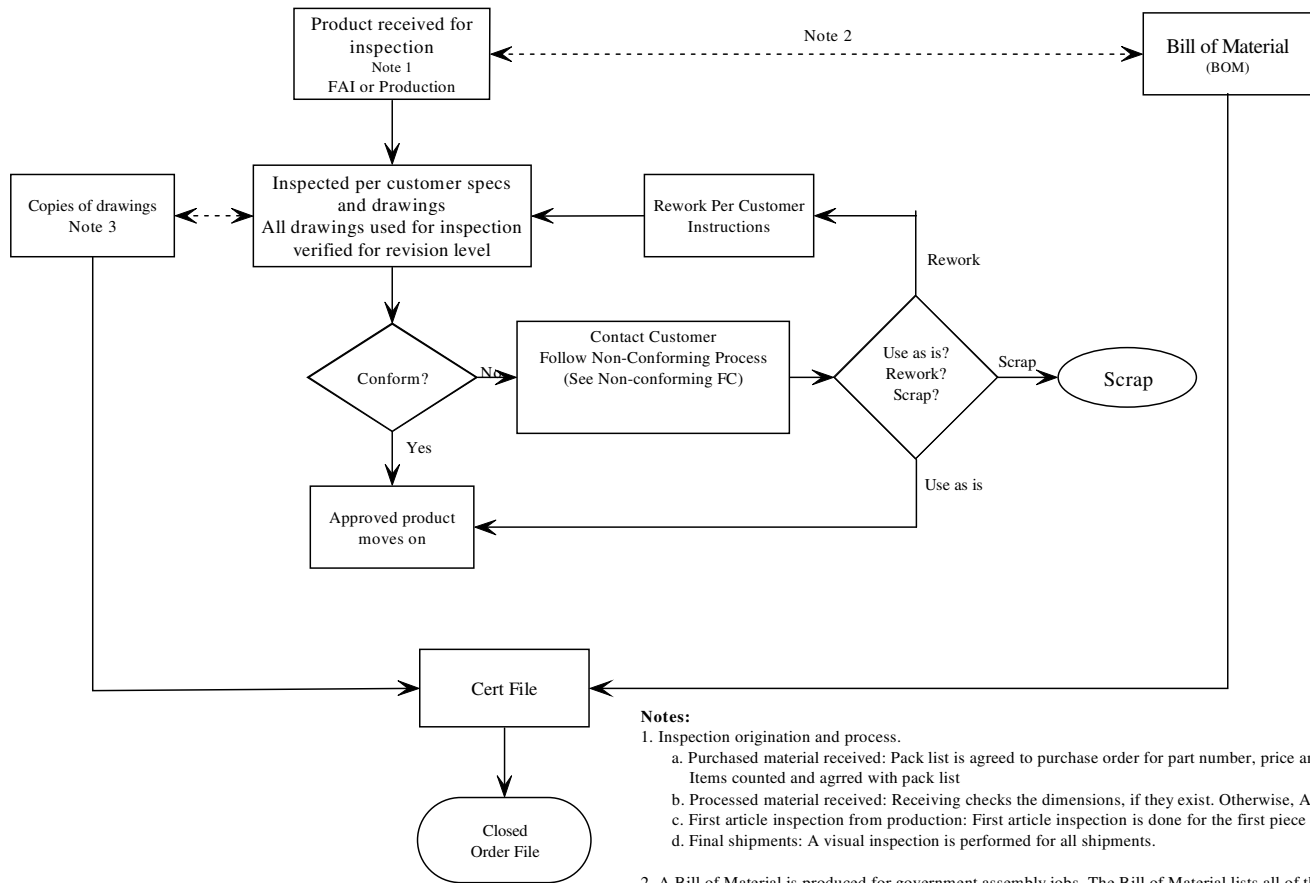


# Kreis Tool Quality Inspection Flowchart



- Notes:**
1. Inspection origination and process.
    - a. Purchased material received: Pack list is agreed to purchase order for part number, price and quantity. Items counted and agreed with pack list
    - b. Processed material received: Receiving checks the dimensions, if they exist. Otherwise, Appropriate management checks certification.
    - c. First article inspection from production: First article inspection is done for the first piece of every production run.
    - d. Final shipments: A visual inspection is performed for all shipments.
  2. A Bill of Material is produced for government assembly jobs. The Bill of Material lists all of the parts for the job, whether the part is purchased or manufactured and whether any outside processes are needed. The final inspection includes a review of this copy of the Bill of Material to ensure that all machining and processing took place.
  3. Copies are made of the drawings for the job. QC inspects the part and inputs the measurements onto a computer worksheet, along with the drawing requirements and tolerances. The worksheet calculates the deviation from the drawing and prints the calculation if it is outside the tolerance levels.
  4. Corrective Action Report is drawn up when material is returned from the customer, or vendor material is rejected. QC fills out a Corrective/Preventive Action Request Form and faxed to the vendor where they report their corrective action and fax it back. QC signs off on the report and keeps it in a follow up file to determine if the problem is recurring.